



# 2025 ABERDOVEY BIKE RIDE

## Main Ride Information

Ride Day Emergency Contact Numbers

07968 661312 & 07920 823471

### **WELCOME**

Welcome to the 2025 Aberdovey Bike Ride, the organisers hope you have an enjoyable day with us, we are here to make your ride to remember. If you need anything please speak to a crew member who will be wearing RED Aberdovey t-shirts will be able to assist.

Please ensure you read this document as there are a few changes again this year.

### **ICE INFORMATION**

All riders must complete the ICE details on the [rider control panel](#).

The information that you give should contain any specific medication or other requirements during the event.

You will be requested to complete your 'In Case of Emergency' contacts.

### **REGISTRATION - 06:30 - 07:30 -SEE APPENDIX 1 FOR MAP**

Please visit the table relating to your rider number which is situated around the bandstand.

You will be given an envelope with your details/ride options, it will contain:-

- WRISTBAND - MUST be worn by riders during the ride, emergency number printed on it.
  - LUGGAGE TAG - Attach to finish bag & take to the bag van, bag not available during ride.
  - BIKE NUMBER x Attach to bike at the front with cable ties.
  - \*FOOD & \*COACH TICKETS - Paper tickets to hand in for food & coach seats.
  - \*BIKE RETURN TICKET - The paper ticket or wristband is required to collect bikes Sat/Sun.
- (\* only if ordered)

**Running late or not riding? Please phone us on the Emergency numbers above and let us know.**

### **THE START - 06:30 - 07:30**

This year there is no mass start, after registration please start your ride ASAP.

- Riders must register before leaving so we know you are on the road.
- Broken down? please phone the control number on your wristband.
- Support vehicles will be en route & will attend urgent calls as a priority.

Any riders who start outside registration hours or leave from a different location must phone the emergency numbers to register after 06:30. We need to know you are on the ride, so we can safely support you.

### **RIDE SAFETY**

**All riders must wear helmets and abide by all traffic legislation.**

The organisers will not be held responsible for any riders who neglect road laws.

Riders are reminded of obligations as set out in the highway code & respect members of the public.

Our public liability insurance cover for the ride stipulates that riders must wear a cycle helmet; riders are therefore warned that they may be personally held liable if a cycle helmet is not worn.

**All riders signing in at registration are accepting the above terms of riding.**

## **STOPS / FEEDING STATIONS**

STOP 1 - SHREWSBURY - Salop Caravans. Please be mindful of customers on this site, keep toilets clean.

STOP 2 - WORTHEN SCHOOL - **REMEMBER CHILDREN ARE PRESENT AT THIS STOP**  
**NO urinating, NO smoking, NO foul language. Please use portable toilets provided.**

STOP 3 - NEWTOWN - same as 2024 location Hafan yr Afon, Back Lane, Newtown SY16 2NH - Appendix 2.

STOP 4 - WYNNSTAY - **YOU MUST CHECK-IN** and confirm short/long route to support and manage missing riders.  
**Cutoff for Long route is 14:30**

STOP 5 - STONEBRIDGE - This is a small stop just to get you through the last 10 miles.  
**NOTE: Please turn off new road/bridge just after stop and join the old road through to Aberdovey- signed**

Stops are staffed by a support crew who will be able to advise and help where required. Food is only available to those riders who have a rider wristband. Please don't be greedy as there are more riders behind you, do not hoard food for later in the ride as stops are evenly spaced throughout the ride.

Please ensure you use the toilets provided, any rider found abusing this rule will be asked to leave the ride and will be banned from future rides.

## **FINISH**

### Bike Return

It is the responsibility of the rider to ensure their bike is loaded onto the lorry for return to Wolverhampton. We use a removal company and your bike (remove any GPS, trackers etc.), any other items must be kept with rider. We suggest a bike bag is used if your bike is valuable. The company do have relevant insurance, any claims made must be referred via the event organisers.

### Lost Property

Any lost property will be available at the finish for a short period and then transported back to Wolverhampton. Please email [ride@aberdoveybikeride.org.uk](mailto:ride@aberdoveybikeride.org.uk) with any queries relating to lost property.

### Bag Collection

Please collect your bag from the storage area. Do not put valuables in your bags as carriage is at your own risk. We cannot be held responsible for any loss or damage during transit & storage.

### Showers

Showers are available at the Yacht Club and the Outward Bound Building. Please bring some 20p's for the showers.

### Food

Relax and enjoy a cup of tea with the RNLI, a drink from the bar or food if you have requested it during entry (ticket required). Entertainment is available at Aberdovey which culminates in speeches at around 19:00'ish.

### Coaches

Coaches will leave at approx. 19:30 for riders with coach tickets. Coaches will drop off at West Park and Faulkland St.

**NO TICKET - NO SEAT - we have no spare seats available - all tickets will be checked.**

**NO option to drop off en-route, please do not ask the driver as they have been informed to refuse these requests.**

## **LOSS & DAMAGE**

Aberdovey Bike Ride cannot be held responsible for the loss or damage of your possessions or valuables during transit. This includes your bike, bags, valuables and any other items passed for carriage.

**\*\* DO NOT LEAVE VALUABLES IN YOUR BAGS \*\***

- Your bike is not covered by the removal company while in transit or storage. Please use a bike bag if needed.
- Any lost property will be available at the finish for a short period and then transported back to Wolverhampton.
- Please email [ride@aberdoveybikeride.org.uk](mailto:ride@aberdoveybikeride.org.uk) with any queries relating to lost property.

## SPONSORSHIP

### OFFLINE

A sponsor form is [available here](#), payment details are at the end of this document.

### JUST GIVING/OTHER ONLINE FUNDING

Set up a Just Giving page to aid in collecting sponsor money, please [see here for instructions](#).

Crowdfunding will require proof (receipt etc.) of payment to the named charity.

## MINIMUM SPONSOR MONEY – £100 (£125 – 202.5 for 2025 Ride)

**If you don't want to raise any sponsor money you should consider cancelling your ride by contacting us via email or using the online control panel option.**

## PAYING SPONSOR MONEY

### BANK TRANSFER

Please include RIDER NUMBER & SURNAME as reference. Please forward all sponsor forms after you have paid to the address below.

G DIVISION CYCLING CLUB NO 2  
LLOYDS ACCOUNT NO: 00478530  
SORT: 30 99 83

### CHEQUE

Please consider using Bank Transfer which is an easier option for us.

### PAYPAL

**We do not accept any sponsor money payments via PayPal due to the charges incurred.**

### CONFIRMATION OF PAYMENT

Please allow 28 days from paying for us to bank and check your payment.

Your Riders Details & Account pages will be updated with all payments made by both the above payment methods. If still not confirmed please email us with details of your payment method and amount so we can check our records

## AFTER THE RIDE

### Bike Collection –

Bikes can be collected from the rear of Burke Bros, Trading Estate, Fox's Lane, Wolverhampton. WV1 1PA at the following times only

- Friday 20th June
  - **Bike collections are not available on Friday night.**
- Saturday 21st June
  - **12:00 – 15:00 only**
- Sunday 22nd June
  - **16:00 – 18:00 – Burke Bros reserve the right to charge storage after these times.**

Any lost property will be available at the finish for a short period and then transported back to Wolverhampton. Please email [ride@aberdoveybikeride.org.uk](mailto:ride@aberdoveybikeride.org.uk) with any queries relating to lost property.

### Feedback

We welcome your feedback on the ride and will be sending out a questionnaire to all this years and previous riders regarding the ride.

We are experiencing a low return of riders and reduced amount of riders since covid. Help us to keep the Aberdovey Bike Ride going for the future by sending us your feedback.

APPENDIX 1 - START - WEST PARK



RED - ENTRANCE TO REGISTER  
BLUE - RIDER EXIT ROUTE

APPENDIX 2 - FINISH - ABERDOVEY YACHT CLUB

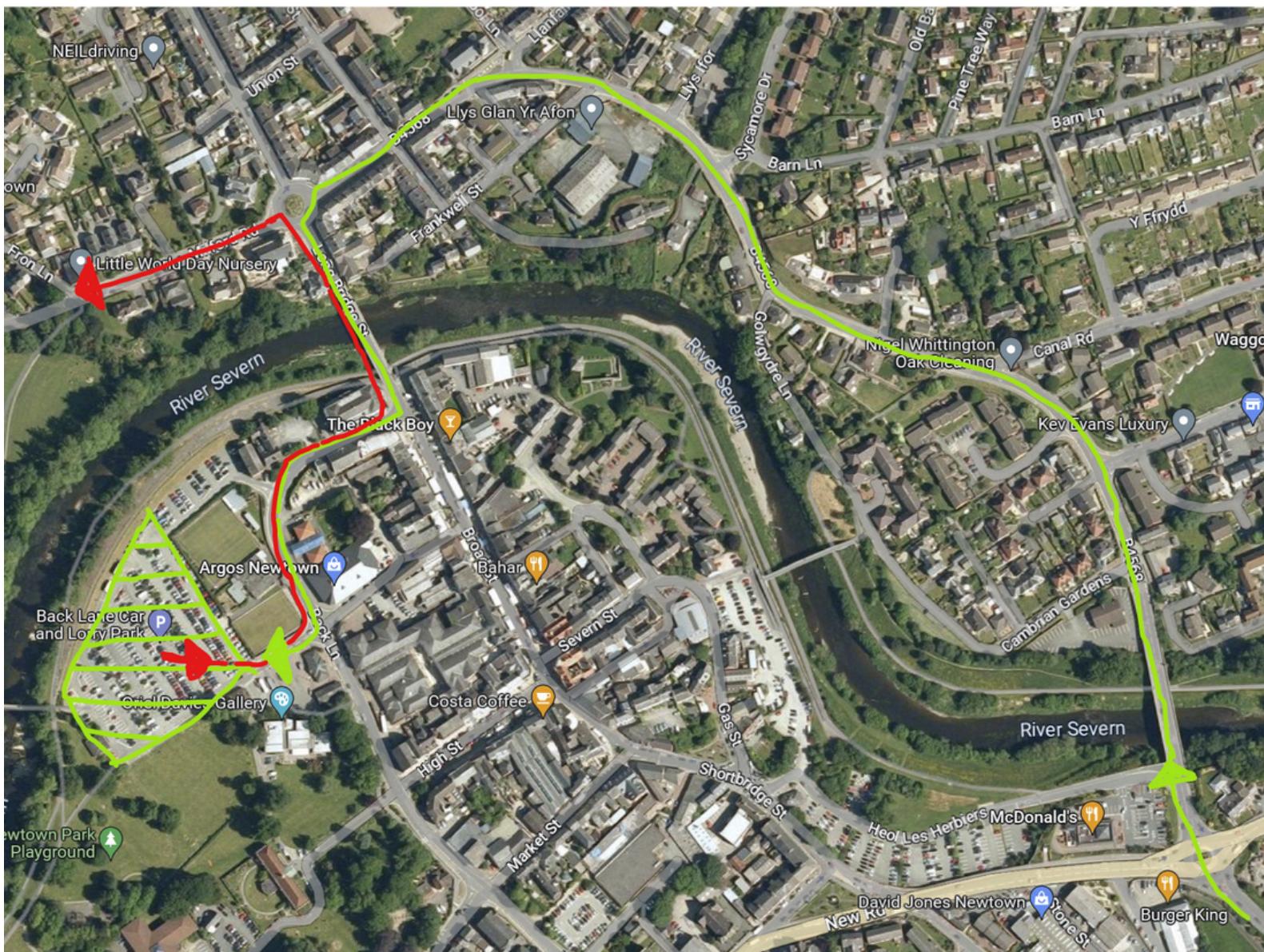
PURPLE - RIDE ROUTE  
GREEN - FINISH LINE  
YELLOW - CAR PARK (PAY)  
RED AREA - NO PARKING





### APPENDIX 3 - NEW NEWTOWN STOP

New Newtown stop - ride past McDonalds, follow normal route until you get to island with Christian Centre. Turn Left, over the bridge and follow road and turn right into Wesley St. You will see the stop at the end of road.



### APPENDIX 4 - ROUTE MARKERS

Please see the following which are the route markers for this years ride.



The organisers and support crews look forward to meeting you during the Aberdovey Bike Ride, we hope you have a safe and enjoyable ride with us and a safe journey home.

Registration for the 2026 ride should open around November 2025

[ride@aberdoveybikeride.org.uk](mailto:ride@aberdoveybikeride.org.uk)

[Aberdovey Bike Ride Facebook page](#)

[HTTPS://ABERDOVEYBIKERIDE.ORG.UK](https://aberdoveybikeride.org.uk)